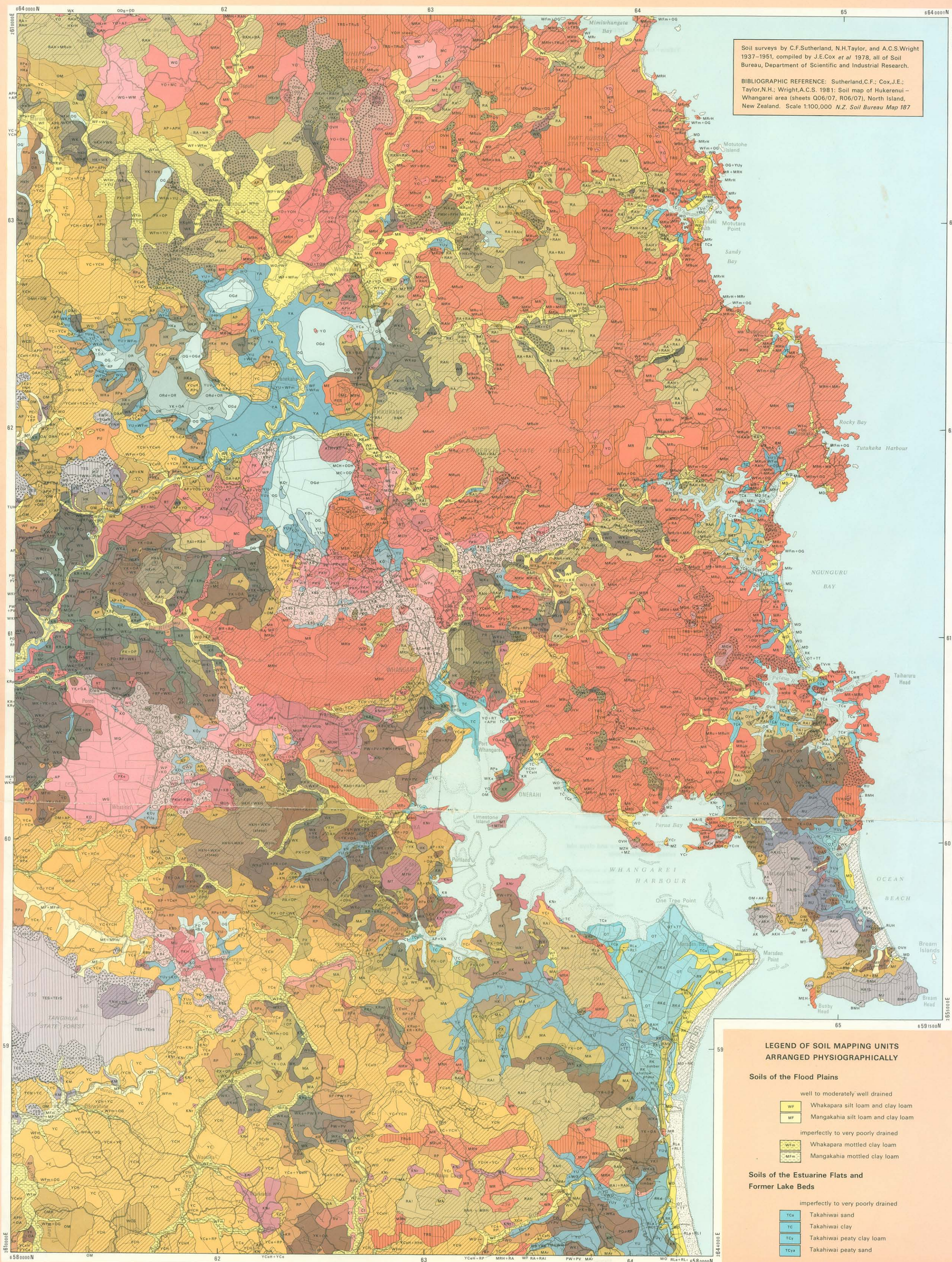


HUKERENUI - WHANGAREI

NZMS 290 SHEET Q06/07
Part Sheet R 06/07

Soils of the Undulating Terraces and Lowlands (ctd)

KSa	Kara sandy loam
KRp	Kara sandy loam with pan
KR	Kara silt loam
KRp	Kara silt loam with pan
EPv	Kara peaty silt loam
EPa	Kara clay
OB	Otonga peaty clay loam
OGa	Otonga loamy peat
YA	Waipuna clay
YU	Waipuna clay
YUv	Waipuna peaty silt loam and peaty clay
OR	Otakairangi peaty clay loam
ORa	Otakairangi loamy peat

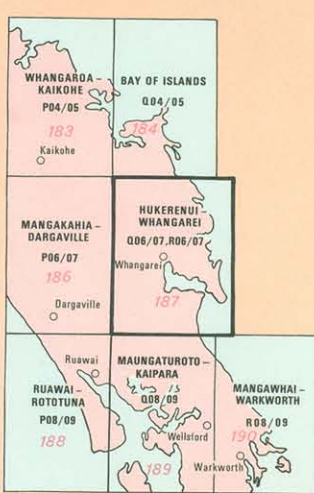
Soils of the Rolling and Hilly Land

well to moderately well drained	
MOv	Maunu silt loam
MO	Maunu bouldery silt loam
WM	Waimate North clay loam
PKv	Papakauri silt loam
PKa	Papakauri clay loam
WB	Whaitiri clay loam
OBa	Ohaeawai shallow bouldery silt loam
KR	Kiripaka bouldery silt loam
KRp	Kiripaka bouldery silt loam with compact subsoil
KRp	Kiripaka bouldery silt loam with compact subsoil, large boulders
MA	Maungakohatu friable clay
MSv	Mangakahia silt loam
MS	Tikitohe gravelly silt loam
MS	Tikitohe reddish gravelly silt loam
WP	Whakapara clay loam
WPa	Whakapara friable clay
YCa	Okaiahi gravelly friable clay with dull brown subsoil
YCa	Waioitu friable clay
YCa	Waioitu friable clay with large boulders
RT	Ruatangata friable clay
RTv	Ruatangata friable clay with large boulders
TKv	Takitu gravelly clay loam
BM	Bream clay loam
ATv	Apotu friable clay
MCv	Matarau friable clay
MC	Matarau friable clay with large boulders
TK	Tikupunga friable clay
YN	Waimatenui clay
PU	Purua silt loam
PU	Purua clay loam
MBv	Marua brown clay loam
MR	Marua clay loam
MBv	Marua light brown clay loam
MBv	Rangiora clay
AK	Awapuku clay loam
PKv	Pokapu gravelly silt loam
ME	Maungarei clay
MBv	Maungarei clay with large boulders
PKv	Puketurua sandy clay
YCa	Waioitu clay loam
OM	Omu clay loam
OMa	Omaiko gravelly silt loam
imperfectly to very poorly drained	
TKv	Takitu gravelly clay loam
OTa	Otahe clay
OTa	Otahe gravelly clay loam
YCa	Waioitu brown clay loam
YCa	Waioitu clay
KN	Konoti clay loam
KNv	Konoti clay
APv	Apunga clay
RAv	Rangiora clay, clay loam and silty clay loam
RAv	Rangiora silty clay loam
RPv	Riponui clay and sandy clay
RPv	Riponui sandy clay loam and sandy loam
PUv	Purua clay
MA	Mata clay
MAv	Mata brownish clay
PKv	Puketitiro sandy loam
MAv	Mahurangi fine sandy loam
OA	Okaka clay and silty clay
PI	Piroa clay
PUv	Pukekarewa sandy loam
OTa	Otahe silt loam
WPa	Waikare silty clay
WPa	Waikare silt loam
OMa	Omaiko gravelly silt loam with pan
HUK	Hukerenui gravelly silt loam
HUK	Hukerenui sandy loam
HUK	Hukerenui silt loam
HUKv	Hukerenui silt loam with yellow subsoil
PUv	Pukenamu silt loam
MT	Motatau clay
RV	Rockvale clay
WPa	Wharekhe sandy loam
WPa	Wharekhe sandy loam with pan
WPa	Wharekhe fine sandy loam, ash variant
WPa	Wharekhe fine sandy loam with pan, ash variant
WPa	Wharekhe silt loam with brown subsoil
WPa	Wharekhe silt loam
WPa	Wharekhe silt loam with pan
PP	Parahi fine sandy loam and silt loam

Soils of the Steep Land

excessively to somewhat excessively drained	
HA	Huia steepland soils, stony silt loam
well to moderately well drained	
TK	Te Kie steepland soils, stony clay loam
TK	Te Kie steepland soils, reddish clay loam
WCS	White Cone steepland soils, sandy clay loam
TR	Te Ranga steepland soils, clay loam and stony clay loam
TR	Te Ranga steepland soils, light brown clay loam and stony clay loam
TR	Parakore steepland soils, stony clay loam
imperfectly to very poorly drained	
HGS	Pukekarewa steepland soils, clay loam
Drifting and/or recently stabilised sands	Mottled soils
Wet swamps (not investigated)	Gravelly soils
Hill soils	Bouldery soils
Steepland soils	Stony soils
Soil Boundary	
Black line Vincula - links areas of same soil type.	

SHEET INDEX



Soil information

184 Soil Bureau Map Nos for adjacent sheets

COMPILATION NOTE - The base map is compiled from the NZMS 1 series (1:63,360) dated 1964, 65, 70, 73, 75

NEW ZEALAND LAND INVENTORY

SCALE 1 : 100 000

Metres 1000 0 1 2 3 4 5 6 7 8 Kilometres

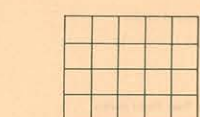
REFERENCE

WHANGAREI	Cities	Rivers and streams
KAIKORU	Towns	Trig stations
HOUHOU	Settlements	Vincula (separate parcels under same ownership)
	State highways	Land holding boundaries
	Other roads	Sand and mud
	Tracks	
	Railways	

This map is one of a series. Themes mapped in this study are - Land Tenure and Holding, Rock Types, Soils, Existing Land Use, Wildlife, Indigenous Forest.

This map is drawn on the New Zealand Map Grid Projection, a minimum-area conformal projection. The grid is the New Zealand Map Grid, showing coordinates in metres in terms of the Geodetic Datum 1949, based on the International (Hayford) Spheroid.

The smallest area mapped is generally not less than 10 hectares. Calculation of areas from this map should be within the limitations of scale. For example, individual areas should be rounded to the nearest 5 hectares. Accumulated areas should be rounded to the nearest 50 hectares.



Published by the Department of Lands and Survey, New Zealand, under the authority of W.N. Hawkey, Surveyor General.

P.D. Hasselberg, Government Printer, Wellington, New Zealand.

NOTE: Legend of soil taxonomic units arranged pedologically is shown on the reverse side of this map.

HEIGHTS ARE IN METRES ABOVE MEAN SEA LEVEL

CROWN COPYRIGHT RESERVED